



ScanRouter EX Enterprise

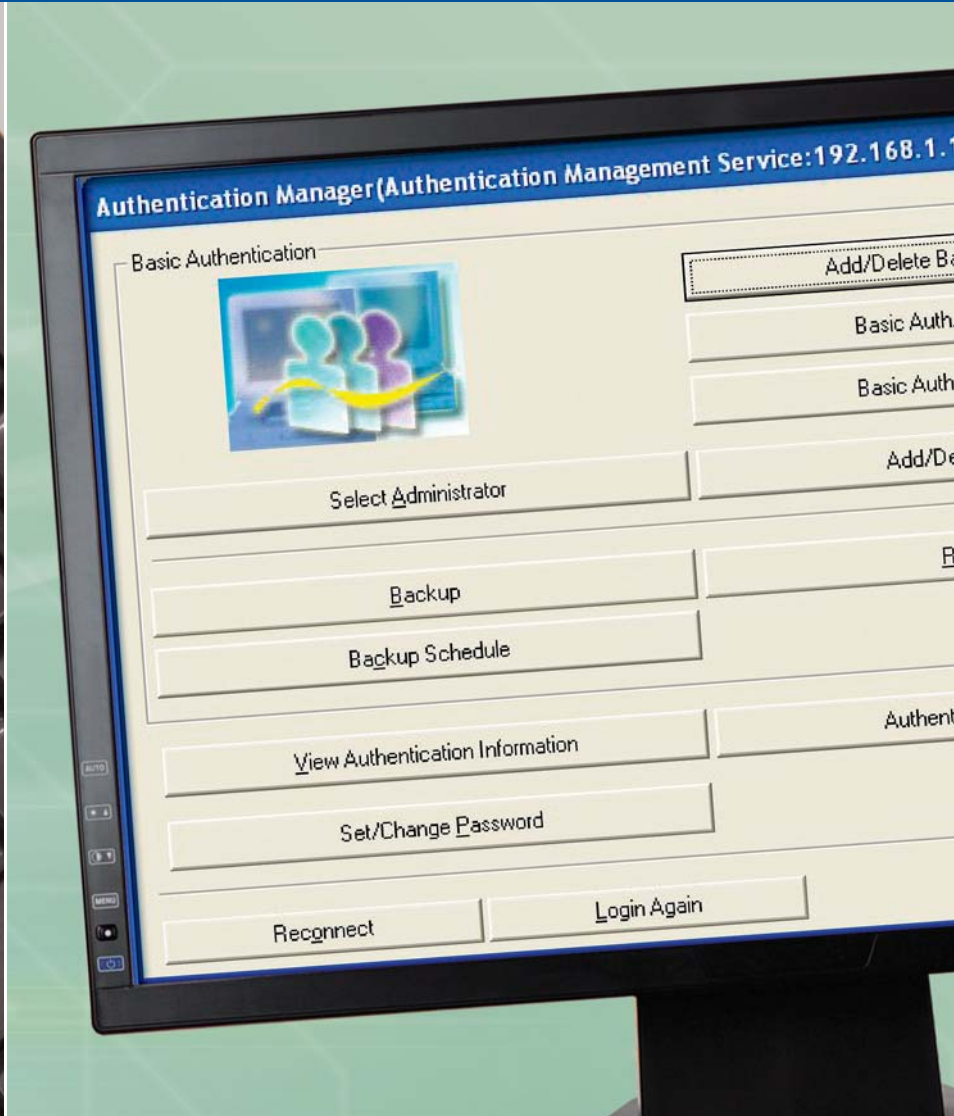
SCAN >

SHARE >

MANAGE >

FILE >

SUCCEED >



**Digital document
distribution software.**



Decision Makers Can Now Choose How To Simplify The Document Management Process.

Savin's new ScanRouter EX Enterprise solution lets you decide how to control the flow of documents throughout your organization. ScanRouter EX Enterprise software provides simple, electronic delivery of scanned documents over your existing network. Using ScanRouter EX Enterprise, you can convert photos, schematics and handwritten reports into electronic files through the front panel of Savin's Multifunction Products (MFPs).

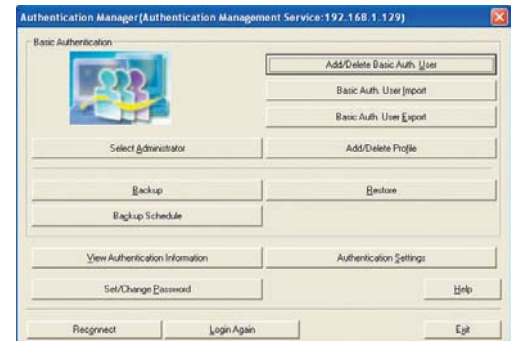
Additionally, this software solution turns your standalone copier/printer into a rapid, paperless, network-wide document distribution system. It offers network scanning and paperless incoming fax routing. Scanned documents and incoming faxes are quickly and easily delivered to individual or group names via your office network; plus, there is more...

ScanRouter Server

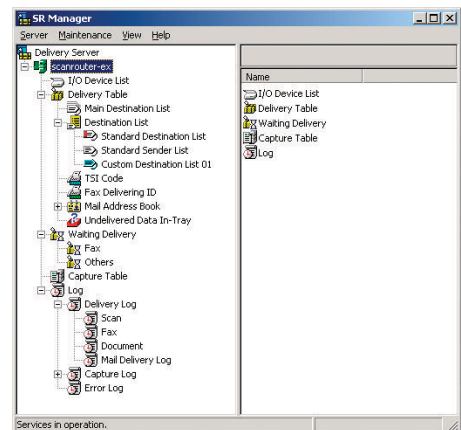
With ScanRouter EX Enterprise loaded on a dedicated PC and directly interfaced with your MFP, network administrators can create and modify system settings at the ScanRouter Server. All of this is easily accomplished from the SR Manager application, which can be run on any PC on your network. Personal In-Trays for all registered users reside on the ScanRouter Server.

Auto Document Link Link

Included with DeskTopBinder, Auto document link enables your staff to automatically monitor and download new documents from In-Trays on the ScanRouter EX Server.



Authentication Manager



SR Manager

ScanRouter EX Enterprise

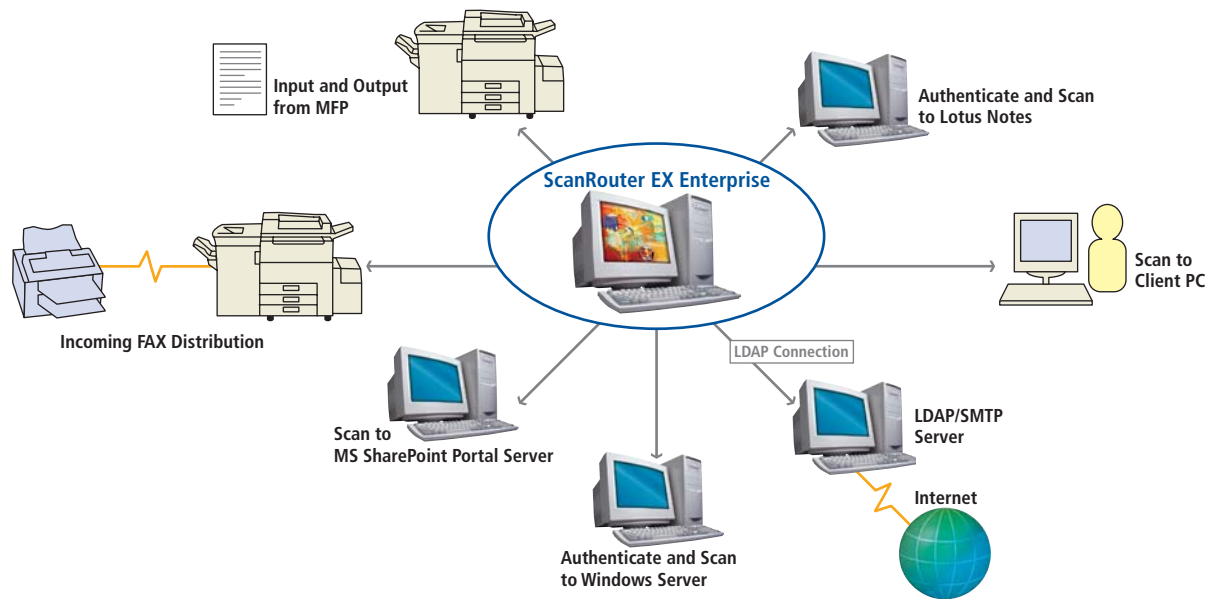
SCAN >

SHARE >

MANAGE >

FILE >

SUCCEED >



Features and Benefits

Network Security

- Windows, Lotus Notes, or Basic authentication can now be used to define Access Control Lists of In-Trays
- Customize the security of your documents
- Integrates with security features of new Savin MFP's

Electronic Document Distribution

- Reduces paper supply costs
- Enables rapid distribution of time-sensitive faxes and scanned documents
- Automatically notifies network clients of incoming documents
- Enables color scans on supported devices

Easy-to-Use Operation Panel

- Prompts users through scan and distribution process
- Facilitates quick job turnaround

User & Group Address Book

- Up to 90,000 destinations can be registered (depending on the device)
- Displays registered users on the MFP operation panel
- Accesses up to 90,000 E-mail addresses through LDAP
- Allows an unlimited number of group members to be registered as one address

Multiple Scan Settings

- Attach subjects and sender names
- Extract keyword to name documents, or set customized document names
- Ensure accurate scans of originals with up to 600 dpi with options for Black & White, Grayscale, and Color scans (on devices supporting color scans)
- Automatically scan a wide range of paper sizes and types

Document Storage & Retrieval

- Store documents to a variety of locations, such as ScanRouter EX In-Trays, or Networked PC's/servers
- View and retrieve documents from In-Tray's using DeskTopBinder
- Import documents automatically with AutoDocumentLink
- Receive documents via email
- Notify users of new documents

Send & Receive Digital Faxes

- Automatically route faxes electronically to email, network folder, or Fax In-Tray
- Convert faxes to PDF for easy access
- Backup all faxes for disaster recovery

SCANROUTER SERVER
PC SPECIFICATIONS

Operating System

Windows 2000 Server + Service Pack 4 or greater
Windows 2003 Standard Edition
Windows 2003 Enterprise Edition

CPU

Minimum = Pentium 4 1GHz
Recommended = Pentium 4 3GHz or greater

Memory

Minimum = 1GB
Recommended = 2GB or more

Hard Drive

Minimum = Installation - 600MB, Data Storage - 500MB
Recommended = Installation 600MB, Data Storage - 1GB or more

Network Protocol

TCP/IP

SR MANAGER
PC SPECIFICATIONS

Operating System

Windows 98/Me
Windows 2000 Server/Professional + Service Pack 4 or later
Windows XP Professional/Home + Service Pack 1 or later
Windows Server 2003 Standard Edition
Windows Server 2003 Enterprise Edition

CPU

Pentium 266MHz minimum

Memory

Minimum = 128MB
Recommended = 256MB or more

Hard Drive

Installation - 10MB or more

Network Protocol

TCP/IP

SUPPORTED ENVIRONMENTS

Mail Systems	Database Systems	Network Systems
Microsoft Exchange Server	Lotus Notes/Domino	Microsoft Windows
Microsoft Mail Server	Microsoft SharePoint Portal Server	Novell Netware
Lotus Notes Server		FTP Servers
SMTP-compliant mail servers		

SUPPORTED DEVICES

ScanRouter EX Enterprise supports a wide array of Savin devices, including Black and White MFP's, Color MFP's, Network Scanners, and Network Facsimiles.

Please visit www.savin.com for a complete and up-to-date list of supported devices.

DOCUMENT FORMAT OPTIONS

File Formats:	Compression Options:
TIFF (single and multi-page) TIFF-F PDF (single and multi-page) Text PDF (single and multi-page) JPEG PNG	Uncompressed MR MH MMR High Compression PDF