



MicroPress® Pro Series 7.0

SERVER & CONTROLLER SOLUTIONS



Scalable
Flexible
Accurate

Scalable Digital Workflows



The EFI MicroPress® is perfect for critical production print environments, with productivity features that optimize speed, maximize efficiency, minimize downtime and ensure job completion.

Cutting Edge Productivity and Reliability.

The MicroPress ProSeries 7.0 Software leverages the latest in platform and operating system technology to deliver powerful digital prepress and workflow management to industry leading black & white and color printers. MicroPress Servers allow even the most basic environments to quickly plug into digital workflows and are easily integrated into existing environments and emerging technologies.

MicroPress Servers maximize productivity and print quality for all Print-on-Demand environments. Even entry level configurations make an immediate impact with advanced make-ready tools, optimized job throughput and unmatched quality. The flexible, scalable design provides a growth path to meet future demands with color and black & white engines, RIPs and software features easily added.

MicroPress Production Workflow Server

A power server designed to meet the demands of heavy production print environments, driving up to 12 devices with flexible, powerful workflow and complete fault-tolerance.

MicroPress Professional Workflow Server

A fully featured Print-On-Demand server that combines patented workflow and clustering technologies, driving up to four devices.

MicroPress Prodigy Workflow Server

A cost effective solution that delivers powerful digital prepress and workflow management to single engine configurations.



One server that can take your entire workflow anywhere you want to go.



EFI MicroPress makes a quantum leap with the new ProSeries 7.0. MicroPress industry leading editing tools, workflow automation and productivity features deliver a new level of performance with a fresh, easy to use GUI, powerful Media Catalog, on screen Color Management tools with visual feedback, WYSIWYG editing views with page and chapter level control and much more. ProSeries 7.0...the next step in Print-on-Demand.





The EFI MicroPress is built on the latest proven technologies to provide unmatched productivity. Maximized engine speed and sophisticated error recovery combine with our patented clustering technology to elevate print engine performance to levels that were previously unachievable.

Expert Tools For Digital Prepress

TruePrint

Drives each device at its maximum speed regardless of page content or number of pages in a document.

TrueRecover

Page and job level error detection and recovery across one or multiple devices are automatically handled without manual intervention, ensuring completion of mission critical jobs.

TrueCluster

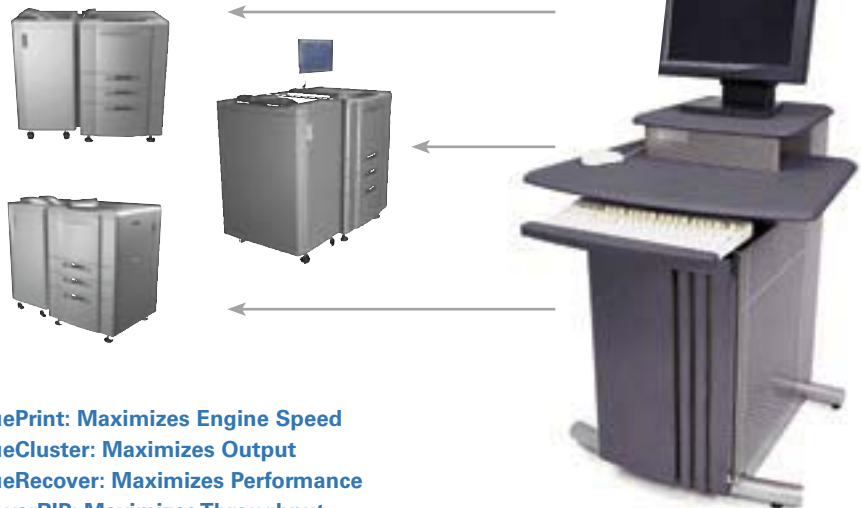
Job parsing across multiple devices gives you the flexibility to print multiple jobs simultaneously or large jobs quickly, easily accommodating variations in job size and workflow.

PowerRIP

A second, third or even fourth MicroPress RIP on a single server allows simultaneous processing of multiple files, increasing throughput and productivity and ensuring that large files do not create a production bottleneck.

Universal GUI (Graphical User Interface)

A single GUI that controls multiple engines and accurately reflects device features in a consistent format improves productivity by consolidating activity and reducing learning curves on new or different engines.



TruePrint: Maximizes Engine Speed

TrueCluster: Maximizes Output

TrueRecover: Maximizes Performance

PowerRIP: Maximizes Throughput

Universal GUI: Maximizes Operation Efficiency

TrueEdit dramatically improves productivity by streamlining workflow and automating manual processes such as hand collating, tab inserting, document renumbering and booklet creating.



TRueEdit Features

TrueEdit is a suite of advanced make-ready tools that enable you to prepare already RIPped documents for printing. Digital prepress capabilities give you total independence from the original application and author to make job and page-level changes.

Post RIP edits do not require re-processing, allowing files to print immediately after edits have been made.

TAB EDITOR FEATURES

Insert multiple, edit all, Multi-line and Bitmapped tab support

TAB BUILDER FEATURES

Detect text in margins, create tab pages and place text on tab

LAYOUT MODES

Choose layout mode to quickly view document layout, for easy page level settings and tab insertion

PAGE LEVEL MEDIA SELECTION

Select media from Page Properties for individual pages or page ranges

SELECT PAGES BY ATTRIBUTE

Identify pages based on selected criteria (Paper Size, Media Type, Tray or Page Type)

CHAPTER (TAG) SUPPORT

Allows creation of chapters, easily identified in TrueEdit and enables many TrueEdit functions to be applied on a chapter basis (Add Tabs, Drag & Drop, Apply Property, Apply Action, Add Header, Footer, Number, etc.)

ICC SUPPORT

Use device and monitor ICC profiles to display color jobs for accurate color representation

MERGE RIPped FILES

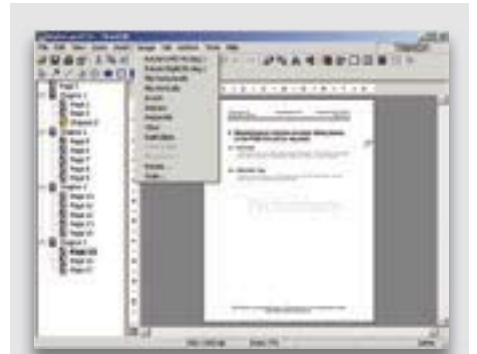
Allows documents created in different applications to be easily merged

IMPOSE

Advanced control supports custom layouts and templates, improving flexibility and enabling almost any arrangement. Quickly creates booklets for professional output.

VARIABLE DATA

Automates form creation and mail merge applications



Features:

- Cut, Copy, Paste
- Insert & delete pages
- Add lines, arrows and objects
- Set unique page settings
- Edge Mask, Margin Offset, Creep
- Clean and straighten pages
- Reformat for punching and stapling
- Export job or page range to PS,PDF, or TIFF
- Save selected area as a file, Paste from file
- Convert to Color Insert, Insert Color Insert(s)
- Insert blank page(s) , Insert alternate size blank page
- Merge RIPped files
- Number, Header, Footer
- View Thumbnails
- Scale to Gray
- Scale, Rotate, Flip, Invert
- Deskew, Despeckle, Clear
- Paint Black
- Clear Edges
- Tumble page range-all, even, or odd
- Edge Masking, Margin Offset, Gutter

*With TRueEdit Remote most of these capabilities are available on the desktop, allowing multiple editing sessions and bringing robust make-ready to unattended environments.

Flexibility And Control



Job Management Features

MicroPress Servers provide Print-On-Demand environments with advanced job management and complete engine control to optimize workflow.

PrintStation Manager

The control panel for all jobs and engines controlled by the MicroPress, the newly designed PrintStation Manager retains all of its power in an intuitive, GUI that increases ease of use and productivity and reduces learning curves.

Media Catalog

Allows operators to import, export and manage media entries using terminology familiar to users and provides seamless integration to EFI Digital StoreFront. Increases ease of selecting job and page level media, and reduces confusion and errors.

Job Ticket

Populated from Digital StoreFront Express web submission ticket and editable in PrintStation Manager, the job ticket improves productivity and reduces errors. Alerts operator to conflicts between job specs and engine capabilities when dragging jobs between unlike engines, reducing misprints and associated waste.

Auto Archive

Automates archiving to any network location, improving productivity and reliability and optimizing storage resources. Makes search data available to DAM applications for powerful content management.

TrueScript

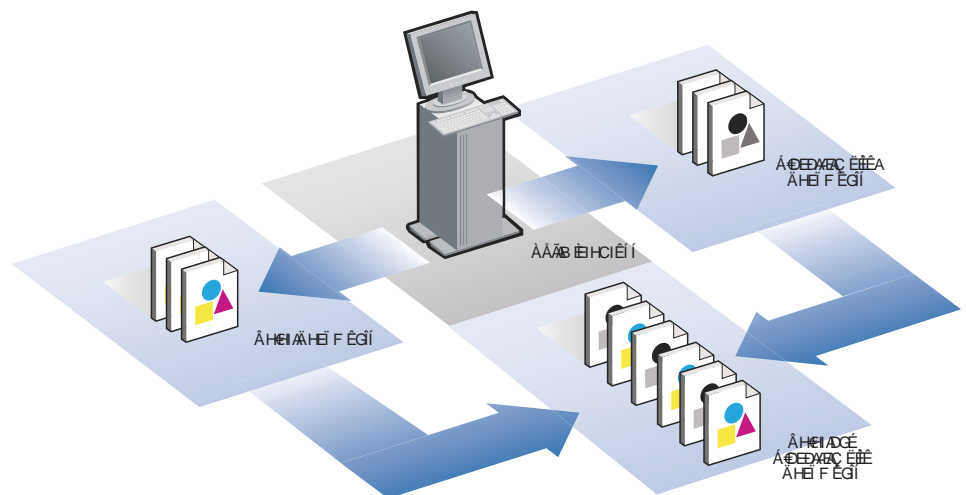
Automates frequently performed tasks to reduce manual activities and streamline workflow.

Open Printer Connection Virtual Engine

Routes RIPPed jobs to PCL printers, allowing almost any device on the network to take advantage of MicroPress make-ready tools.

Color and Black & White Split

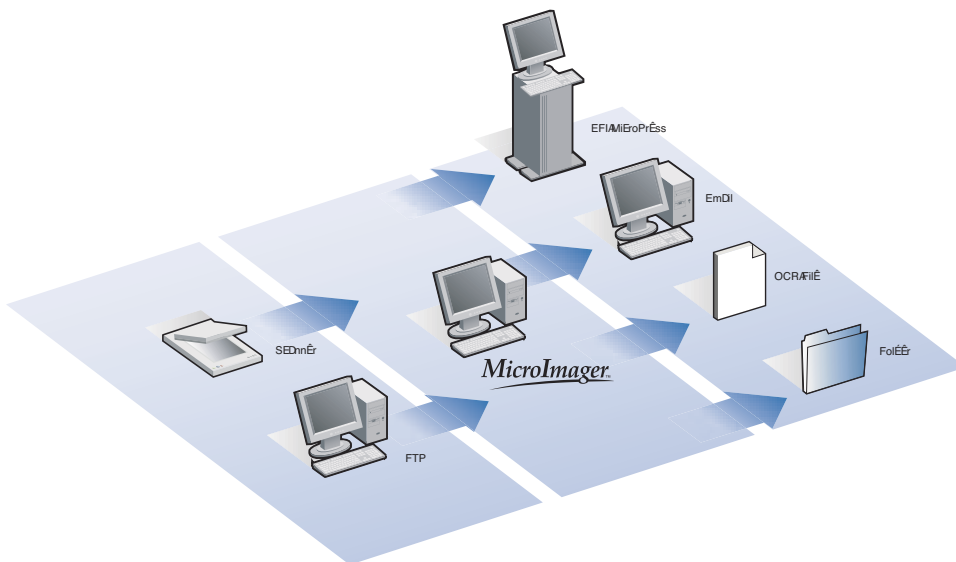
Automatically splits color and black & white pages to appropriate devices, eliminating need for manual collation and reducing costs.



Color and Black & White Split

Automatically splits color and black & white pages to appropriate devices, eliminating need for manual collation and reducing costs.

The MicroPress job management features automate and streamline workflow for busy print environments and tight engine control gives users the power to select the finishing combinations they need to get the results they want.



MicroImager™

A powerful document imaging and workflow solutions that streamline the process of scanning, preparing and distributing hard copy documents.



Tight integration to print engine allows the MicroPress to leverage all engine features, including extensive finishing capabilities:

- Select subset stapling options on a page range basis
- Select multiple subset features for overlapping page ranges
- Specify tray pulls for multiple non-sequential pages simultaneously
- View job and page level features
- Preview jobs
- Schedule jobs
- Change ICC profiles and tone curves
- Calculate toner coverage
- Export job info to third-party billing tools

Professional Tools for Accurate Color



TrueColor Features

MicroPress' patented post-RIP calibration, color matching and user adjust technologies improve user productivity and results.

Gammatic

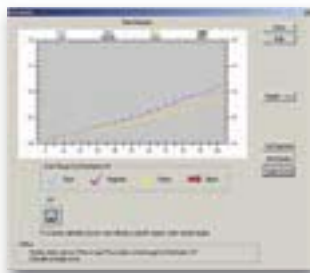


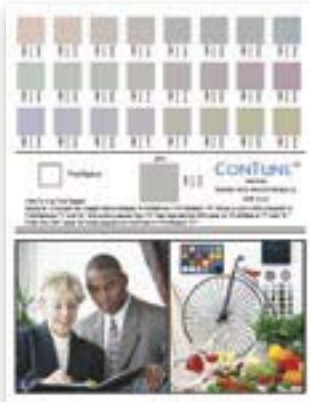
Image Editing

Allows easy adjustment of RIP functions using actual job or canned image with real-time feedback on screen. Provides an intuitive way to adjust colors with instant visual feedback on changes. Reduces trial and error printing and waste.

Gammatic

Calibrates single, multiple and clustered devices to a universal standard for consistent color output. Post RIP calibration ensures reprinted jobs match previous runs.

ConTune



ConTune

Allows user adjustments to ensure that documents printed across multiple engines appear identical.

ICC Profile Processor

Automatically recognizes RGB, CMYK, Lab and Spot Colors, even when mixed on the same page, and intelligently maps them to the correct CMYK values for each printer.

Color management GUI

Gives users complete control, allowing them to select ICC profiles and rendering intent per image type. Mouse flyby descriptions and images improve user understanding and reduce learning curve.

Spot Color Matching

Pantone® calibrated RIP provides a unique spot color handling that yields the most accurate Pantone matching in the industry. Spot color files can be printed as swatch sheets for easy color selection.

TrueCurves - Universal Curve Creation

Makes curve creation quick and easy with mouse drag functionality and anchor points for sophisticated fine-tuning. TRueCurves can be applied to the job as a ColorCurve and also to the RIP as a Tone Curve or as an adjustment to calibration, allowing pin-point control in a few simple steps.

Multiple proofing emulations per printer

Allows a single engine to produce various proofing emulations by virtue of selectable printer queues with different color setups.

TrueBlue Spot Color Editing

"Quick Pick" method simplifies getting spot colors the way you want them. Users can edit colors from a Spot Color Library or a custom spot color in their job.

Spot Color Matching



MicroPress' patented post-RIP calibration, color matching and user adjust technologies improve user productivity and results.



In addition to superior execution of fundamental requirements, MicroPress provides image management features that are not available in other offerings:

Thumbnails

Prints multiple thumbnails of a print job on a single page, each with a different tone curve applied for easy comparison.

SoftProof

RIP to TIFF for easy comps of layout, RGB intercept & fonts. For color critical users, color can be proofed on screen by using a color aware application such as Photoshop®. Soft proofing saves time and money, identifying issues before resources are committed to the job.

Export / Import

Export sections of a RIPped page as a TIFF file for editing in an application like Photoshop. Edited images can be pasted back to the page for immediate re-printing.

Post RIP Color Adjust

Adjust CMYK tint, contrast and brightness on RIPped jobs or apply custom CMYK curves to the job for highly customizable color rendering. Adjusted files do not need to be reRIPped and are available for immediate printing.

Press Simulations

MicroPress Universal Servers ship with 17 press/proof simulations as well as support for custom profiles.

- Hot Folders
- Paper Simulation
- Trapping
- Multiple
- Plate printing
- DCS capable
- Local/Decentralized color matching
- TIFF/IT (optional) ...and many more.



The most complete package in the industry.

EFI MicroPress ProSeries 7.0 Servers encapsulate production print workflow into a single server, eliminating the need to patch together a workflow from a variety of applications and plug-ins. MicroPress integration into the EFI workflow system gives users a single source solution that reduces problems with conflicting versions or unexpected upgrade results that occur with multiple vendor solutions. EFI is the only vendor who can provide this, and EFI MicroPress ProSeries 7.0 is the solution for serious production printers.

The most complete package in the industry.

SYSTEM	Prodigy	Professional	Production
Productivity	Drives up to 1 engine	Clusters up to 4 engines	Drives up to 12 and clusters 8 engines
TruePrint Productivity	Drives 1 engine	Clusters up to 4 engines	
TrueCluster	N/A	S	S
TrueRecover	S	S	S
MicroPress RIP	S	S	S
PowerRIP (2nd RIP)	N/A	O	2nd RIP standard, up to 4
TRuePCL	O	O	S
Universal GUI	S	S	S
Rapid Reprints Make-Ready	S	S	S
TrueEdit	S	S	S
TrueForms	S	S	S
Merge	S	S	S
Tabs	S	S	S
Insert and Delete	S	S	S
Numbering	S	S	S
Re-Order Pages	S	S	S
Scale and Rotate	S	S	S
Center Pages/Margin Offset	S	S	S
Imposition	S	S	S
Open Printer Connection			
Virtual Engine Job Management	N/A	O	S
TrueScript Auto Archive	N/A	O S	S S
Annotations	S	S	S
Hold and Move	SS	S	S
Preview jobs	S	S	S
Schedule jobs	S	S	S
OCR	N/A	O	S
Export job info to third-party billing tools Calculate toner coverage	S	S	S
E-PSM	N/A	N/A	S
MicroSpool	O	S	S
MicroImager	O	O	S
Gammatic Image Management/TrueColor	S	S	S
ConTune	S	S	S
ICC Profile Processor	S	S	S
CMYK Adjust	*	S	S
Spot Colors	*	S	S
TRueBlue	*	S	S
Contrast	S	S	S
Brightness (41 levels)	S	S	S
TrueCurve	S	S	S
Hot Folders	S	S	S
SoftProof	S	S	S
Paper Simulation	*	S	S
Trapping	*	S	S
Multiple Plate printing	*	S	S
17 pre-loaded Press/Proof & 5 RGB simulations		*	S
Automatic Solid color, RGB, CMYK, Lab	*	S	S
Digital StoreFront	O	O	O

In the chart above, S indicates Standard, O indicates Optional features and * indicates model dependent features.



303 Velocity Way
Foster City CA 94404
(650) 357-3500
www.efi.com

Auto-Count, ColorCal, ColorWise, Command WorkStation, EDOX, EFi, Fiery, the Fiery logo, MicroPress, Printcafe, PrinterSite, Prograph, Proteus, and Spot-On are registered trademarks of Electronics for Imaging, Inc. in the U.S. Patent and Trademark Office and/or certain other foreign jurisdictions. Bestcolor is a registered trademark of Best GmbH in the U.S. Patent and Trademark Office. AutoCal, Digital StoreFront, DocStream, Fiery Link, FreeForm, Hagen, Intelligent Device Management, Logic, OneFlow, PrintFlow, PrintMe, PrintSmith Site, PrintSmith, PSI Flexo, PSI, SendMe, Splash, VisualCal, the EFi logo, Essential to Print are trademarks of Electronics for Imaging, Inc. Best, the Best logo, Colorproof, PhotoXposure, Remoteproof, and Screenproof are trademarks of Best GmbH. All other terms and product names may be trademarks or registered trademarks of their respective owners, and are hereby acknowledged.