



# Enhanced Locked Print Solution

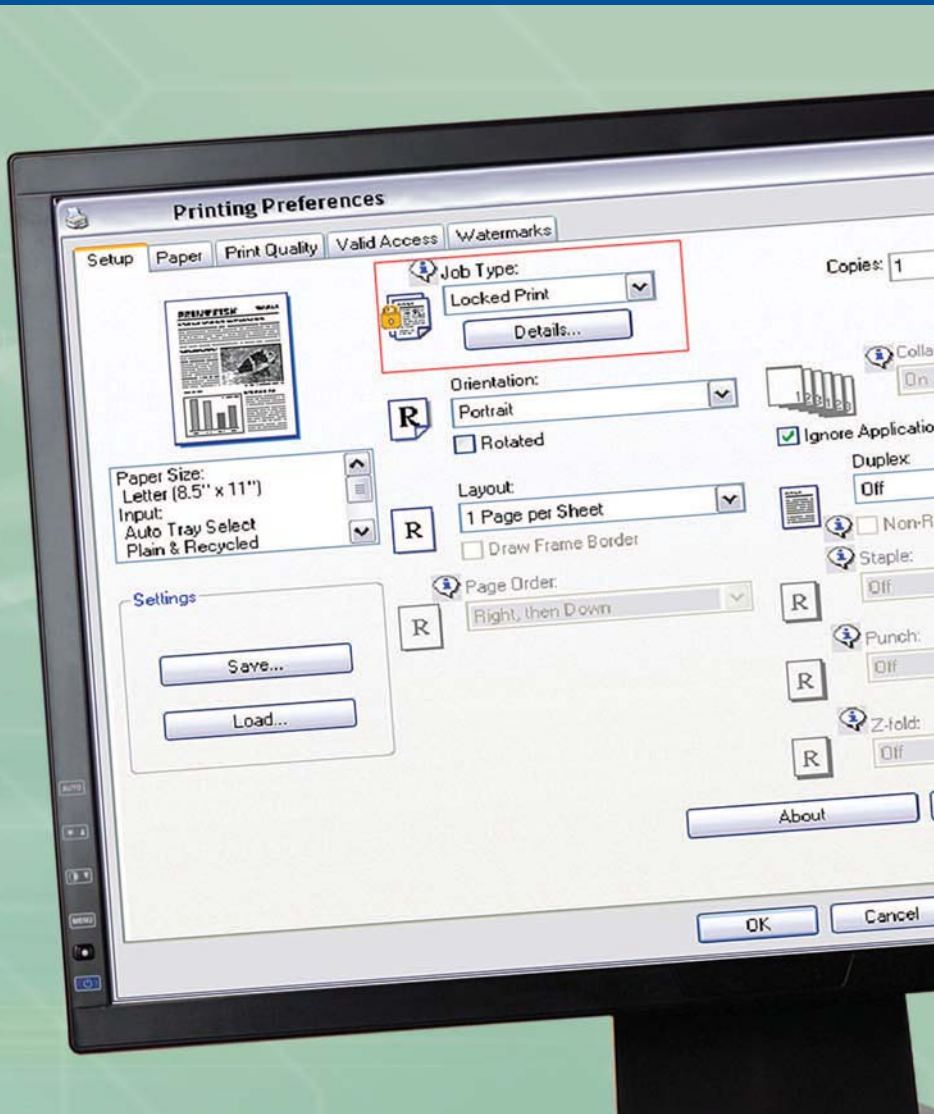
SECURE >

CONTROL >

MANAGE >

PRINT >

SAVE >



**Valuable document security  
for shared systems.**

## The benefits of shared printing without the security risk.

Savin Enhanced Locked Print lets you capture all the benefits of shared, centralized MFPs—increased functionality plus reduced printing, maintenance and ownership costs—without compromising document security. Because Enhanced Locked Print is built into the MFP, with no extra hardware or software to purchase and install, it's a fast, simple solution for protecting your organization's confidential and proprietary information.



Savin's optional card reader provides additional ease of use for environments using existing proximity card systems via the automated release of print jobs stored on the MFP.

## Multi-layered security.

Store, manage and release confidential documents with the security of user ID and password authorization at the MFP.

- **Hardcopy security**—“Locked” documents can't be released by another MFP user. And because documents have to be released at walk-up, they won't be left unattended in output bins where people can see them inadvertently.
- **Individualized security**—Only jobs related to a specific user ID and password are displayed on the LCD panel, so confidential documents will stay confidential.
- **Virtual security**—Compressed, encrypted files remain securely held even if the hard drive reaches maximum capacity, the power is turned off, or the hard drive is stolen.

## User-friendly and convenient.

A simple interface gives you the ability to easily control printing, while administrators can monitor both users and document printing.

- **As-needed protection**—Protect specific documents by selecting "Locked Print" from the print-driver menu.
- **Automatic security**—Administrators can set “Locked Print” as the default for organization-wide document protection.
- **Secure document release**—Enter your User ID and password at the MFP to release or delete documents, whether individually or as a batch.
- **Simple configuration**—Administrators and users can easily configure settings using a familiar, standard web browser.

## Attractive cost savings.

- **Minimal deployment costs**—Embedded firmware means there is no external hardware or software to purchase or install.
- **Lower operational costs**—You can consolidate your organization's printer fleet to shared MFPs without sacrificing the security of individual dedicated printers.
- **Capture cost savings**—You'll benefit from MFPs' lower cost-per-copy. Plus, by consolidating your printer fleet, you'll have fewer devices to purchase and maintain.



With Savin's FlexRelease option enabled, print jobs securely stored on one MFP can be accessed and released from other Savin MFPs on the network without the need for any external hardware or software.

[www.savin.com](http://www.savin.com)