

# SAVIN®

## C4040/C5050 Color Digital Imaging System

FAST >

FLEXIBLE >

POWERFUL >

VIBRANT >

COLORFUL >



**Outstanding color with  
exceptional versatility.**



## Superior productivity — in color or black & white.

The fast and flexible SAVIN® Systems completely redefine what you can expect from cost-effective, full-color multifunctional systems. Based on an award-winning design, both models provide outstanding color quality for all your business-critical documents — as well as crisp, detailed results for black & white output — so you can impress customers and hold their attention when you need it most.



The large, full-color W-VGA control panel makes it easy to program jobs in seconds. It also offers a Simplified Display option and animated user guidance for common tasks.

The C4040/C5050 also offer scanning, faxing and professional finishing, plus innovative tools for streamlining workflow and optional high-end color control. These dynamic, affordable systems make it easy for any organization to complete more color jobs in-house and significantly boost productivity.

# C4040/C5050 Color Digital Imaging System

**FAST > FLEXIBLE > POWERFUL > VIBRANT > COLORFUL >**

## Fast Output For Any Document

Rely on the Savin C4040/C5050 to deliver outstanding speed and productivity whether you need full-color or black & white documents, or a mix of both.

- Print and copy comps, presentations, spreadsheets and other jobs at speeds up to 40 or 50 pages-per-minute in full-color and black & white.
- Start every job faster. First color copy times are 6.5 or 5.9 seconds, and 3.9 or 3.5 seconds for black & white. You can also expect short warm-up and recovery times from Off/Sleep mode.
- Handle large color files and complex print jobs quickly and easily. Both systems come standard with a 1 GHz controller, 1 GB RAM and a 160 GB Hard Disk Drive.
- Get connected in any environment. Meet local networking requirements with a wide range of standard and optional interfaces, plus compatibility with Windows, Macintosh, Unix and AS/400.

## Consistently Impressive Color

The Savin C4040/C5050 use a powerful combination of patented PxP™ Toner and sophisticated print engines to provide bold, vivid color for any application.

- Use color to enhance your image. Replacing conventional black & white with compelling color lends a distinctively professional look and feel to your documents. It makes key messages more memorable and helps your company stand out.
- Expect vibrant results for important documents — such as client proposals, new business plans or competitive bids — with resolutions up to 1200 x 1200 dpi.
- Reduce expensive outsourcing. These systems allow users to produce a wide range of professional color documents very cost effectively, in-house.
- Eliminate the risk of fraud and abuse. Control access to color capabilities and tightly manage costs with a wide array of security features.

## Professional Finishing

Expand the range of documents you can produce. The Savin C4040/C5050 offer a full line of paper handling and finishing options.

- Fuel your creativity. Print on many stocks and sizes, and generate a range of finished styles from three-hole-punched training packets with covers to postcards, spreadsheets, presentations, and more. The systems support output sizes up to 12" x 18" (through the Bypass Tray) and accept paper weights up to 140 lb. Index.
- Finish a wider variety of jobs without outsourcing. Choose from an optional 1,000-Sheet Finisher with stapling, a 2,000-Sheet Booklet Finisher with saddle-stitching and optional hole-punching, or a 3,000-Sheet Finisher with stapling and optional hole-punching.
- Print or copy lengthy documents without stopping to reload paper. The systems offer a standard paper capacity of 1,200 sheets.
- Increase paper capacity to meet the needs of high-volume workflows. Options include a Two-Tray Paper Bank, a 2,000-Sheet Tandem Large Capacity Tray (LCT) or a 1,200-Sheet Side LCT. Maximum paper capacity (with both LCTs) is 4,400 sheets.

## Removable Media



Take your files with you instantly by scanning them directly to removable media, such as an SD card or USB flash drive.

## Professional Finishing



Handle more jobs in-house — and reduce expensive outsourcing — with fast, high-quality color and a full line of finishing options.

## Do More Than Ever Before

To maximize efficiency, the Savin C4040/C5050 can be equipped with advanced, yet easy-to-use scanning, faxing and document distribution technologies.

- Deliver documents to any destination instantly. Available *Scan-to* functions include Scan-to-Email for rapid delivery, Scan-to-Folder for automated archiving and information sharing, Scan-to-Media (USB/SD) for document portability and Scan-to-URL to reduce network traffic.
- Minimize file size, reduce network traffic and maintain exceptional image quality by converting scanned files into High Compression PDFs.
- Send or receive fax documents electronically with Internet (T.37) faxing, use LAN faxing to send faxes from a PC without leaving your desk, or use IP (T.38) and Super G3 faxing for quick delivery to conventional fax numbers.
- Reduce the risk of fax errors. Both systems detect blank pages and enable users to double-check fax destinations prior to transmission.

- Print a PDF or JPEG attachment by sending an e-mail directly to the system using the innovative Mail-to-Print feature, which saves time and gives you even more flexibility for printing your documents.

## Exceptional Accessibility

Designed for convenient accessibility for everyone in the workplace, these systems incorporate user-friendly features that make them easier to operate and align with Section 508 requirements.

- Improve ease of use with the large, full-color control panel. You can also use the Simplified Display feature, which shows fewer function keys and uses a larger screen font.
- Get animated, step-by-step instructions for routine tasks, such as clearing paper misfeeds or replacing toner.
- Accommodate all users with a convenient design. Toner cartridges can be replaced with one hand. Paper trays can be easily opened with an overhand or underhand grip.

Also, the scanner and document feeder can be detached and placed on a desk, making every function accessible to all users.

- Handle a long list of document and device management tasks remotely. View detailed system information and network settings, and monitor supply status right from a standard Web browser.

## Strong Investment Protection

Organizations of any size can benefit from the Savin C4040/C5050s' superior productivity, reliable performance and low total cost of ownership (TCO).

- Maximize uptime and reliability. Both systems are engineered to keep pace with even the most demanding workloads, so you can keep TCO as low as possible.
- Take advantage of full-color workflows without compromising your budget. These systems make it more affordable than ever to get color exactly when you need it.

## Solution Partners



All of these organizations and many more are among a long list of Savin solution partners.

## Detachable Scanner



The detachable scanner option makes these systems' functions completely accessible to all users.

# C4040/C5050 Color Digital Imaging System

**FAST > FLEXIBLE > POWERFUL > VIBRANT > COLORFUL >**

## Precise Color Control

Add the optional EFI Fiery™ Controller to achieve high-end color control and management for professional workflows.

- Take full advantage of the print engines' outstanding color capabilities for graphics-intensive applications and accurate spot color matching.
- Fine-tune color output for application-specific needs. With the EFI Fiery™ Controller's built-in tools, you can achieve superior results for RGB, CMYK and even PANTONE® colors.
- Print complex color documents such as page layouts, concept drawings or proof sheets quickly, consistently and accurately with the additional firepower of a Fiery™ Controller.
- Control workflow, reprint jobs and even combine documents with the powerful Command WorkStation™ tool.

## Ironclad Security

A complete line of security features helps keep sensitive documents and the systems themselves safe from a variety of threats.

- Use encrypted PDF transmission to prevent unauthorized data interception. This feature encrypts PDF data for both Scan-to-Email and Scan-to-Folder applications.
- Control which individuals have access to which system functions, such as scanning or color copying, with robust User Authentication.
- Protect business-critical information with the DataOverwriteSecurity System (DOSS) option. It automatically overwrites the hard drive after copy, scan, fax and print jobs, so hackers can't steal confidential files. You can also use the HDD Encryption option to protect data, even if the hard drive is removed or stolen.

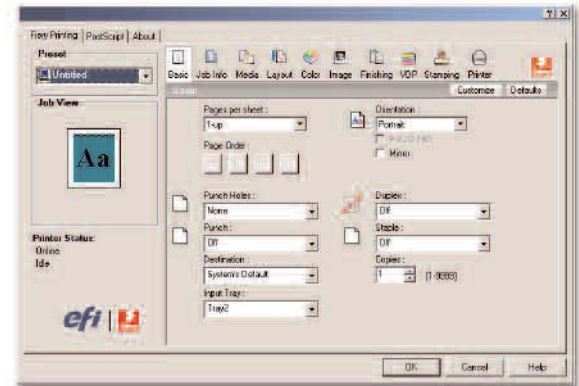


## Advanced Document Solutions

With the Savin C4040/C5050, offices can utilize an extensive portfolio of powerful, easy-to-integrate software solutions and a growing number of innovative technology partners.

- Transform your MFP into a document portal with proven solutions from Savin. Specifically developed for Savin MFPs, these advanced solutions enable document capture and distribution, storage and management, variable data printing, assessment and cost recovery, device management and print security.
- Leverage the smartest, most effective workflow tools and streamline every aspect of your organization with Savin. We partner with industry-leading technology innovators to make sure our MFPs can serve as on-ramps to an extensive selection of applications for content management and other business-critical activities.
- Create specialized, custom applications for the Savin C4040/C5050 with Savin's Embedded Software Architecture™, a Java-compatible Software Development Kit (SDK).

## EFI Fiery™ Controller



For greater control over workflow, color management and spot color matching, choose the optional EFI Fiery™ Controller.

## Your Environmental Partner

Savin continues its long-standing commitment to developing office solutions with environmentally friendly and superior energy- and supply-saving features, without compromising productivity, including:

- Power-Saving Sleep Mode
- Duplex and Combine Copy Modes
- Energy-Saving PxB™ Toner
- Low Noise Levels
- Minimal Ozone Emissions
- Restriction of Hazardous Substances (RoHS) Compliant



## Flexible full-color performance

The **optional Inner One-Bin Tray** provides a cost-effective way to separate copy, print and fax output.

The Savin C4040/C5050 can be equipped with a **1,000-Sheet Finisher** or **3,000-Sheet Finisher** for traditional stapling, or a **2,000-Sheet Booklet Finisher** (shown) for professional-quality booklet-making. The 3,000-Sheet Finisher and 2,000-Sheet Booklet Finisher both offer optional hole-punching.

If no finisher is installed, add the **optional Internal Shift-Sort Tray** to collate document sets. (This tray cannot be installed with other optional finishers.)

Add a **Two-Tray Paper Bank** (shown) or the **2,000-Sheet Tandem Large Capacity Tray (LCT)** for maximum versatility. Both options accept stocks up to 140 lb. Index. Or add a **Cabinet Stand** if the standard paper supply meets your needs.



# C4040/C5050 Color Digital Imaging System

**FAST > FLEXIBLE > POWERFUL > VIBRANT > COLORFUL >**

The **standard 100-Sheet Automatic Reversing Document Feeder** easily handles one- and two-sided originals up to 11" x 17".

**Standard Automatic Stackless Duplexing** produces cost-saving two-sided booklets, brochures, agendas, and more.

Choose the **optional 1,200-Sheet Side Large Capacity Tray (LCT)** to boost maximum paper capacity to 4,400 sheets (with Tandem LCT).

Two **standard Paper Trays** each hold 550 sheets. With the **100-Sheet Bypass Tray**, total standard paper capacity is 1,200 sheets.

## OPTIONAL HARDWARE ACCESSORIES

### Two-Tray Paper Bank (PB3040)<sup>1</sup>

Paper Capacity	1,100 sheets (550 x 2 Trays)
Paper Sizes	5.83" x 8.27" – 11" x 17"
Paper Weights	16 – 68 lb. Bond/140 lb. Index (60 – 256 g/m <sup>2</sup> )
Dimensions (WxDxH)	22.8" x 24.4" x 10.2"
Weight	Less than 57 lbs.

### Tandem Large Capacity Tray (LCT) (PB3050)<sup>1</sup>

Paper Capacity	2,000 sheets Tandem Tray (1,000 x 2 Trays)
Paper Sizes	8.5" x 11" LEF
Paper Weights	16 – 68 lb. Bond / 140 lb. Index (60 – 256 g/m <sup>2</sup> )
Dimensions (WxDxH)	22.8" x 24.4" x 10.2"
Weight	Less than 57 lbs.

### Cabinet Stand (FAC33)<sup>1</sup>

#### Side Large Capacity Tray (LCT) (RT3000)

Paper Capacity	1,200 sheets
Paper Sizes	8.5" x 11" LEF
Paper Weights	16 – 57 lb. Bond/80 lb. Cover (60 – 216 g/m <sup>2</sup> )
Dimensions (WxDxH)	13.7" x 21.3" x 11.4"
Weight	Less than 31 lbs.

Requires Two-Tray Paper Bank (PB3040) or Tandem LCT (PB3050).

#### 2,000-Sheet Booklet Finisher (SR3020)<sup>2</sup>

Paper Sizes	5.5" x 8.5" – 11" x 17", 12" x 18"
Paper Weights	Proof Tray: 14 – 43 lb. Bond/90 lb. Index (52 – 163 g/m <sup>2</sup> ); Shift Tray: 14 – 68 lb. Bond/140 lb. Index (52 – 256 g/m <sup>2</sup> )
Stack Capacity	Proof Tray: 250 sheets (8.5" x 11" or smaller), 50 sheets (8.5" x 14" or larger); Shift Tray: 2,000 sheets (8.5" x 11" LEF), 1,000 sheets (8.5" x 11" SEF, 8.5" x 14", 11" x 17", 12" x 18"); Booklet Tray: 30 sets (2 – 5 sheets/set, all sizes, saddle-stitched); 15 sets (6 – 10 sheets/set, all sizes, saddle-stitched); 10 sets (11 – 15 sheets/set, all sizes, saddle-stitched)
Staple Capacity	50 sheets (8.5" x 11"), 30 sheets (8.5" x 14" or larger)
Saddle Stitch	15 sheets (up to 60 pages)
Staple Paper Sizes	8.5" x 11" to 11" x 17"
Staple Paper Weights	17 – 24 lb. Bond (64 – 90 g/m <sup>2</sup> )
Staple Positions	1 staple/3 positions; 2 staples/2 positions
Dimensions (WxDxH)	25.8" x 24.2" x 37.8"
Weight	Approx. 138.9 lbs. without Punch Unit Option; Approx. 143.3 lbs. with Punch Unit Option

2/3-Hole Punch Unit Option available for Booklet Finisher (SR3020).

#### 3,000-Sheet Finisher (SR3030)<sup>2</sup>

Paper Sizes	5.5" x 8.5" – 11" x 17", 12" x 18"
Paper Weights	Proof Tray: 14 – 43 lb. Bond /90 lb. Index (52 – 163 g/m <sup>2</sup> ); Shift Tray: 14 – 68 lb. Bond/140 lb. Index (52 – 256 g/m <sup>2</sup> )
Stack Capacity	Proof Tray: 250 sheets (8.5" x 11" or smaller), 50 sheets (8.5" x 14" or larger); Shift Tray: 3,000 sheets (8.5" x 11" LEF), 1,500 sheets (8.5" x 11" SEF, 8.5" x 14", 11" x 17", 12" x 18"), 100 sheets (5.5" x 8.5")
Staple Capacity	50 sheets (8.5" x 11" LEF), 30 sheets (8.5" x 14" or larger)
Staple Paper Sizes	8.5" x 11" – 11" x 17"
Staple Paper Weights	17 – 24 lb. Bond (64 – 90 g/m <sup>2</sup> )
Staple Positions	1 staple/3 positions; 2 staples/1 position
Dimensions (WxDxH)	25.8" x 24.2" x 37.8"
Weight	Approx. 119 lbs. without Punch Unit Option; Approx. 123.5 lbs. with Punch Unit Option

2/3-Hole Punch Unit Option available for Finisher (SR3030).

#### 1,000-Sheet Finisher (SR790)<sup>2</sup>

Paper Sizes	5.5" x 8.5" – 11" x 17", 12" x 18" in Proof Tray
Paper Weights	Proof Tray: 14 – 68 lb. Bond/140 lb. Index (52 – 260 g/m <sup>2</sup> ); Shift Tray: 14 – 43 lb. Bond/90 lb. Index (52 – 163 g/m <sup>2</sup> )
Stack Capacity	Proof Tray: 250 sheets (8.5" x 11" or smaller), 50 sheets (8.5" x 14" or larger); Shift Tray: 1,000 sheets (8.5" x 11"), 500 sheets (8.5" x 14" or larger), 100 sheets (5.5" x 8.5")
Staple Capacity	50 sheets (8.5" x 11"), 30 sheets (8.5" x 14" or larger)
Staple Paper Sizes	8.5" x 11" – 11" x 17"
Staple Paper Weights	17 – 28 lb. Bond (64 – 90 g/m <sup>2</sup> )
Staple Positions	1 staple/2 positions; 2 staples/1 position
Dimensions (WxDxH)	10.7" x 20.5" x 31.2"
Weight	55.2 lbs.

#### Internal Shift-Sort Tray (SH3040)

Paper Sizes	5.5" x 8.5" – 12" x 18"
Paper Weights	14 – 68 lb. Bond/140 lb. Index (52 – 256 g/m <sup>2</sup> )
Paper Capacity	250 sheets (8.5" x 11" or smaller) 125 sheets (8.5" x 14" or larger)
Weight	Approx. 4.4 lbs.

Internal Shift-Sort Tray cannot be installed with a finisher.

#### Inner One-Bin Tray (BN3070)

Paper Sizes	5.5" x 8.5" – 11" x 17"
Bin Capacity	125 sheets
Paper Weights	16 – 50 lb. Bond/90 lb. Index (60 – 169 g/m <sup>2</sup> )
Weight	Approx. 5.5 lbs.

<sup>1</sup> Either the Cabinet Stand or one of the paper options must be installed.

<sup>2</sup> All finishers require Bridge Unit.

**FAST > FLEXIBLE > POWERFUL > VIBRANT > COLORFUL >**

## GENERAL SPECIFICATIONS

Printing Process	Dry Electrostatic Transfer System with Dual Component Magnetic Brush Development; 4-Drum Method
Output Speed	C4040: 40-ppm Full-Color/BW C5050: 50-ppm Full-Color/BW
Warm-Up Time	C4040: 34 seconds C5050: 51 seconds
First Copy Time	C4040: Full-Color: 6.5 sec./BW: 3.9 sec. C5050: Full-Color: 5.9 sec./BW: 3.5 sec.
Copy Resolution	600 dpi
Document Feeder	Automatic Reversing Document Feeder (ARDF)/Standard Original capacity: 100 sheets Paper size: 5.5" x 8.5" – 11" x 17" Paper weight (simplex): 10 – 34 lb. Bond (40 – 128 g/m <sup>2</sup> ) Paper weight (duplex): 14 – 34 lb. Bond (52 – 128 g/m <sup>2</sup> ) Dimensions: 22.5" x 20.5" x 5.4" Up to 11" x 17"
Exposure Glass	Up to 999 copies
Multiple Copies	11" x 17" max. (full bleed on 12" x 18")
Copy Size	
Input Capacity	Standard: 2 x 550 sheets + 100-Sheet Bypass Tray; Maximum: 4,400 sheets (w/Tandem LCT and Side LCT)
Output Capacity	Standard: 500 sheets Face Down; Maximum: 3,625 sheets (with 3,000-Sheet Finisher + Inner 1-Bin Tray)
Paper Sizes	First Paper Tray: 8.5" x 11" LEF Second Paper Tray/Paper Bank: 7.25" x 10.5" – 11" x 17"; Bypass Tray: Width: 3.5" – 12", Length: 5.8" – 23.6"; Tandem Large Capacity Tray: 8.5" x 11" LEF; Side Large Capacity Tray: 8.5" x 11" LEF
Paper Weights	Standard Trays/Bypass Tray/Two-Tray Paper Bank/Tandem LCT: 16 – 68 lb. Bond/140 lb. Index (60 – 256 g/m <sup>2</sup> ); Side LCT: 16 – 57 lb. Bond/80 lb. Cover (60 – 216 g/m <sup>2</sup> ); Duplex Unit: 16 – 45 lb. Bond/90 lb. Index (60 – 169 g/m <sup>2</sup> )
Paper Types	Plain/recycled paper, laser printer qualified transparencies, labels, envelopes
Auto Duplex	Standard
Zoom	25% – 400% in 1% increments
Preset Reduction	93%, 85%, 78%, 73%, 65%, 50%, 25%
Preset Enlargement	400%, 200%, 155%, 129%, 121%
Dimensions (WxDxH)	26.4" x 26.7" x 30" (standard configuration)
Weight	Less than 287 lbs. (130 kg) (w/ARDF)
Power Requirements	120V, 12A, 60Hz
Power Consumption	1,500 Watts max.

## PRINTER CONTROLLER SPECIFICATIONS (STANDARD)

CPU	Intel Celeron-M 1.0 GHz
Memory	1 GB RAM and 160 GB HDD standard (shared)
Max. Print Speed	C4040: 40-ppm Full-Color/BW C5050: 50-ppm Full-Color/BW
Print Drivers	Standard: RPCS, PCL 5c, PCL 6, XPS via download; Optional: Genuine Adobe® Postscript® 3™ (includes PDF Direct Print), PS Driver for Mobile Printing
Max. Print Resolution	1200 x 1200 dpi
Standard Interfaces	Ethernet (10Base-T/100Base-TX), USB 2.0, USB Host I/F
Optional Interfaces	Gigabit Ethernet (1000Base-T), IEEE 1284/ECP Parallel, IEEE 802.11a/b/g Wireless LAN, Bluetooth, USB 2.0/USB Slot
Network/OS	Windows 2000/XP/Server 2003/Server 2008*/Vista; Netware 3.12, 3.2, 4.1, 4.11, 5.0, 5.1, 6, 6.5; UNIX; Sun Solaris, HP-UX, SCO OpenServer, RedHat Linux, IBM AIX; Mac OS 8.6 – 9.2x, OS X 10.1 or later; SAP R/3, NDPS Gateway; IBM iSeries; AS/400-using OS/400 Host Print Transform
Advanced Features	WSD printer Support, Advanced Print Queues (Sample Print, Locked Print, Hold Print, Stored Print), Black Overprint, CLP Simulation, Pantone Color Palette, Chaptering, Classification Codes, Mail-to-Print (requires Fax and PS3 options), PDF Direct Print (requires PS3 option), PictBridge® Support (requires Camera Direct Print Card option), Bonjour/DDNS Support, SmartDeviceMonitor for Admin and Client; Web SmartDeviceMonitor; Web Image Monitor; Print Utility for MAC (w/Adobe PS3 option)
Utilities	

\*Server 2008 is not included on the driver CD that ships with the system. It is available via download from the Savin Web site.

## SECURITY SPECIFICATIONS

**DataOverwriteSecurity System (DOSS)** (Optional): Security feature that overwrites latent data on the system's hard drive after copy, print, scan and fax jobs

**Copy Data Security Unit** (Optional): Copies of prints made with this feature will be blacked out or embedded with a watermark to deter illegal copying

**HDD Encryption Unit** (Optional): Encrypts data on HDD, so data is secure even if HDD is stolen

**Other Security Features:** Network Protocol On/Off, IP Filtering, SNMP v3 Support, Encryption (Address Book, Password, PDF, SSL Communication, S/MIME, IPsec Communication), Locked (Secure) Print, User Authentication (Windows/LDAP with Kerberos Authentication (External), Basic and User Codes (Internal), 802.1x Wired Authentication, WPA/WPA2 (Wi-Fi Protect Access Support), and more

## SCANNER SPECIFICATIONS (STANDARD)

Scanner Resolution	600/400/300/200/100 dpi (1,200 dpi for TWAIN only)
Scanning Speed	63-ipm BW and 60-ipm Full-Color (8.5" x 11" LEF/200 dpi)
Auto Scan Size	Glass: 11" x 17", 8.5" x 14", 8.5" x 11"; ARDF: 5.5" x 8.5" – 11" x 17"
Detection	
Scan Mode	BW Text/Line Art, BW Text, BW Text/Photo, BW Photo, BW Grayscale, Full-Color Photo, Full-Color Text, Auto Color Select (ACS)
Compression Method	BW: TIFF (MH, MR, MMR); Grayscale/Full-Color: JPEG
Scan-to Modes	Scan-to-Email (with LDAP support); Scan-to-URL; Scan-to-Folder (SMB/FTP/NCP); Network TWAIN scanning; WSD scanner (for Vista); Scan-to-Media (USB/SD) (optional)

## DOCUMENT SERVER SPECIFICATIONS (STANDARD)

Max. Stored Documents	3,000 documents
Max. Pages per Document	2,000 pages
Max. Total Pages of Stored Documents	9,000 pages

## FACSIMILE SPECIFICATIONS (OPTIONAL)\*

<b>Fax Option Type C5000 (standard on SPF model)</b>	
Type	ITU-T (CCITT) G3, additional G3 (optional)
Circuit	PSTN, PBX
Resolution	200 x 100 dpi, 200 x 200 dpi, 400 x 400 dpi (with optional fax SAF memory)
Modem Speed	33.6K – 2,400 bps w/Auto Fallback
Compression Method	MH, MR, MMR, JBIG
Transmission Speed	G3: Approximately 2 seconds/page (w/JBIG); G3: Approximately 3 seconds/page (w/MMR)
Scan Speed	0.35 seconds/page LEF (Standard/Detail Mode); 0.64 seconds/page LEF (Super Fine Mode)
Auto Dialing	2,000 Quick Dials, 100 Group Dials (500 numbers per group)
Memory Capacity (SAF)	Standard 4 MB (approximately 320 pages); Maximum 28 MB (2,240 pages)
Additional Modes	Internet Fax by E-mail (T.37); IP Fax (T.38); LAN Fax; Fax Forward to E-mail/Folder; LDAP Support
Options	Additional G3 Lines (up to 2); Fax SAF Memory; Telephone Handset

\*Faxing is standard on the C4040SPF/C5050SPF models.

## ADDITIONAL ACCESSORIES

File Format Converter, Key Counter Bracket, JAVA VM Card for Embedded Software Architecture™ Applications, Optional Counter Interface, USB 2.0/SD Slot (for Scan-to-Media), Camera Direct Print Card, Fiery™ Print Controller

## SUPPLIES AND CONSUMABLES\*

Black Toner	23,000 pages
Cyan, Magenta, Yellow Toners	17,000 pages each

\*Toner yields based on 5% coverage.

[www.savin.com](http://www.savin.com)

### Bringing Savin Value to Your Organization

Savin technology offers a diverse portfolio of solutions to help your organization stay competitive and move ahead. Let Savin show you how to empower your business to improve critical processes, keep information secure, ensure compliance and promote environmental sustainability while reducing the total cost of ownership.

Printed in U.S.A. on recycled paper.

Savin Five Dedrick Place, West Caldwell, NJ 07006

SAVIN® is a registered trademark of Ricoh Americas Corporation. All other trademarks are the property of their respective owners. Print speed may be affected by network, application or PC performance. Specifications and external appearances are subject to change without notice. Products are shown with optional features.

S2803

