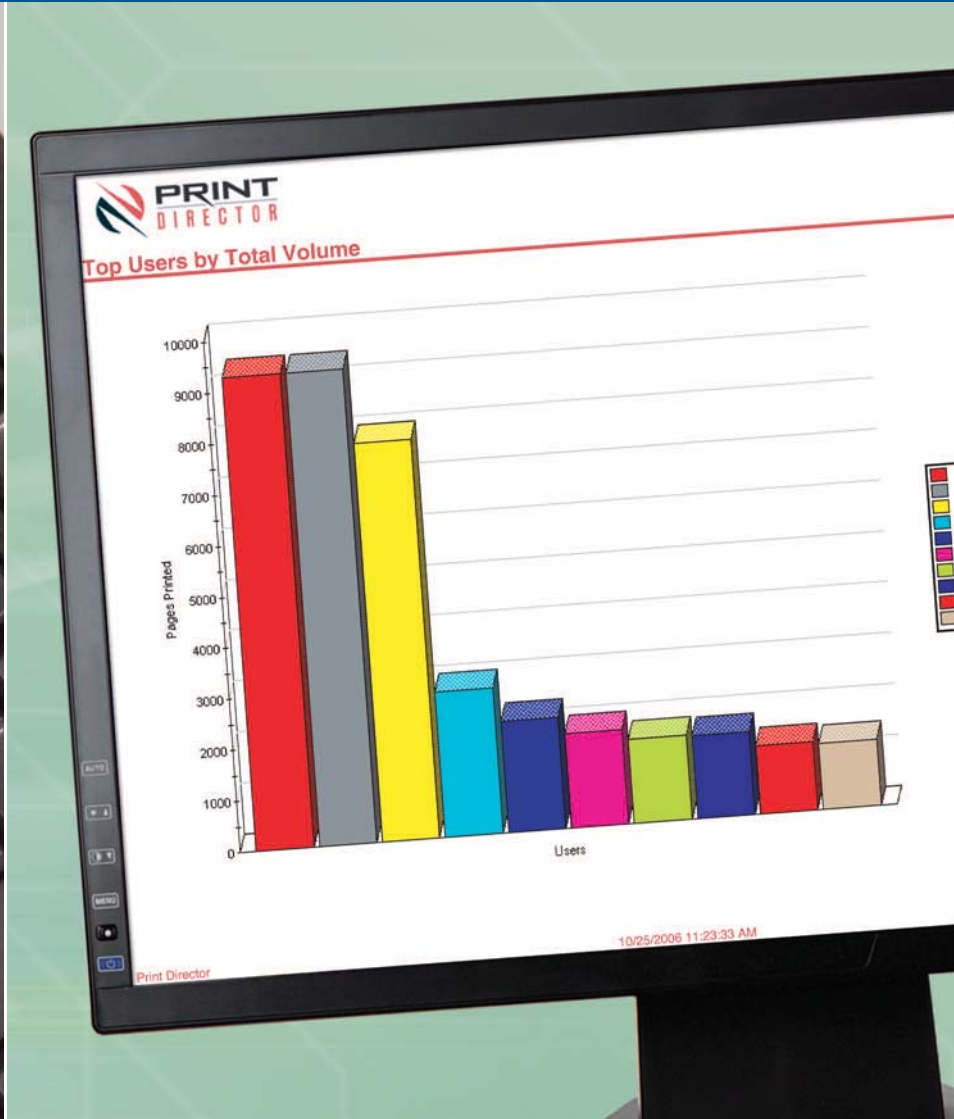




Print Director

Solution

CONTROL > AUDIT > ANALYZE > TRACK > **SAVE >**

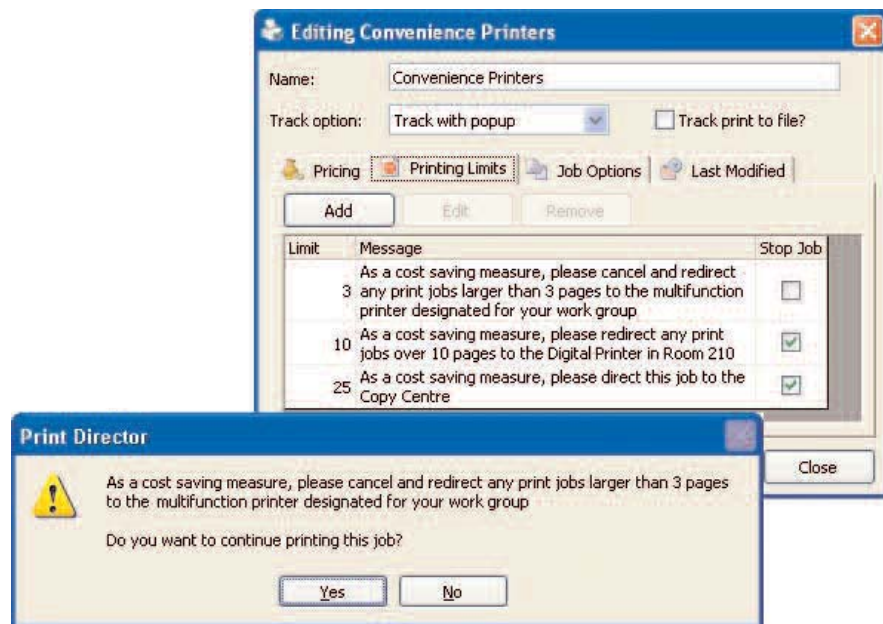


**Track all the details.
Control the big picture.**



Learn how your company prints. And take control of savings.

Wasted paper, missed chargebacks and excessive printing—it's all wasted money. Now, Print Director helps you recapture those costs by giving you more understanding of, and control over, your document production. With centralized management and three independent modules—Analysis, Reduction and Recovery—Print Director makes it easy to reduce your total cost of ownership and build the most cost-effective document production program possible.



Easily create pop-up messages that correspond to your document production rules.

Advanced Rules-Based Control.

The Reduction Module helps you control printing costs and minimize user printing abuse by blocking and redirecting printing or by offering lower-cost alternatives. Plus, pop-up messages can alert employees that printing is being monitored—the most effective way to curtail waste.

- Build savings. Redirect user print jobs to low-cost devices, offer lower-cost alternatives, and block

inefficient situations like black & white printing on color devices.

- Control print volumes. Set device limits by user, application, color-usage, and more.
- Keep users informed. Create pop-ups that display printing limits, job costs, rules-based messages, and more.
- Save paper. Force users to duplex print based on specific printing applications you select.

Powerful Volume Analysis and Reporting.

Print Director's Analysis Module gives you an exact picture of printing and copying volume—no matter how many printers are on your network. Advanced accounting tools also let you easily analyze budgeting, device cost and workflow issues.

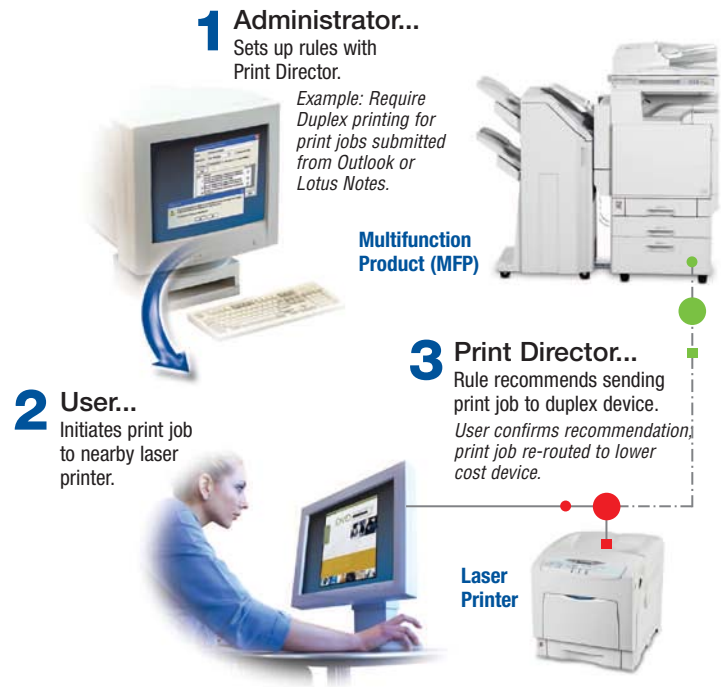
- Save time. Automatically gather all the printing data you need, around the clock and silently behind the scenes, including a system benchmark.
- Capture every detail. Track up to 25 different functions—such as color use, users, page output, and more.
- Gain a new understanding. Review detailed reports that identify under- and over-utilized devices, high-volume users, and more.
 - Over 35 detailed graphical reports—by user, date and time, printer, costs, and more.
 - Executive Summary—current volume by job, pages, user, color, and more.
 - ROI reporting—detailed device cost comparisons.
 - “Top 10” reports—high-level views of issues such as “who prints the most” or “most used printers.”
 - Plus, build your own custom reports based on your organization's needs.
- Build efficiencies and eliminate bottlenecks. Move efficient devices to high-volume areas or move an under-used color device to a better location.
- Easily track usage issues. Create user and device groups for high-level views. For example: “4th floor printers” or “high-volume users.”

Automated and Accurate Chargebacks.

Recapture 100% of your print costs with the Recovery Module's cost-accounting and chargeback tools. It tracks every print or copy and assigns it to the appropriate person, client or department—whatever parameters you chose—with absolute security.

- Capture every chargeback. Use up to five customizable fields for job validation, including client numbers, PINs and job numbers.
- Simplify administration. Choose from a wide range of categories that capture the exact billing information you need—for example, paper type and size, duplex prints, and more.
- Easily manage budgets. Set budgetary account limits by user, job, and more. Use pop-ups to display declining balances, job costs and lower cost alternatives.

Rules Based Printing (workflow example)



Out-of-the-Box Simplicity.

- Wizard assisted, enterprise-wide installation to any number of machines. No separate print server needed.
- Tracks 100% of local, network and direct-to-IP printing on both PC- and MAC-based workstations.
- Automatically registers devices the first time they're used—even “hidden” devices—saving legwork and data entry.
- Offers multiple deployment methods, convenient centralized configuration and data storage, and client-based architecture for low network overhead.
- Supports SQL back-ends; Active Directory, Novell Directory Services; CAD environments; and integration to accounting systems.
- Sends reports to PDF, XLS, XML and CSV files for easy analysis, sharing and integration with other applications.

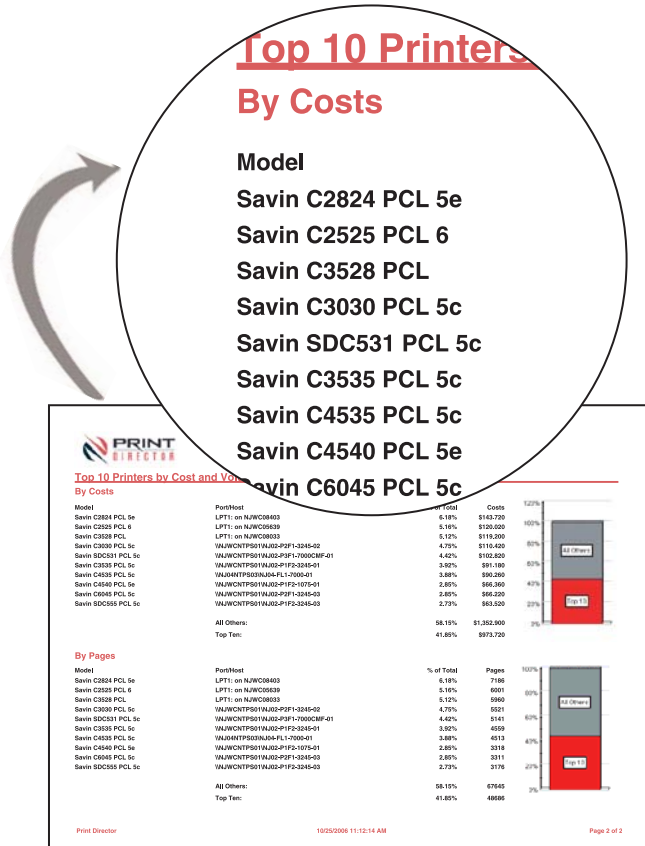
PRIMARY INSTALLATION SYSTEM REQUIREMENTS

- CPU** Pentium-based processor recommended
- Disk Space** 30 MB
1 MB of disk space per 2000 print jobs (Database requirement)
10 MB (Client Communicator)
- RAM** 64 MB minimum
- Server Operating System** Windows XP
Window NT 4.0
Windows 2003
Windows 2000

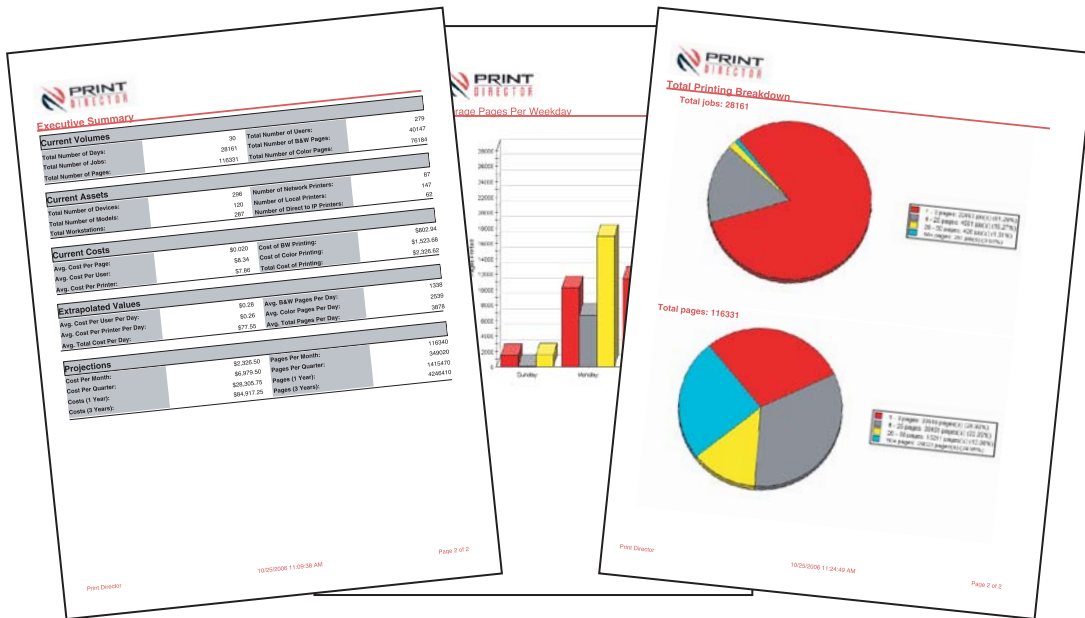
CLIENT SYSTEM REQUIREMENTS

- CPU** Pentium-based processor recommended
- Disk Space** 10 MB minimum free space
- RAM** 64 MB minimum
- Operating System** Windows XP
Windows 9X
Windows Me
Windows for Workgroups
Windows NT 4.0
Windows 2000
Apple Macintosh OS X 10.3.9 or later*

*Requires one Windows-based PC to host the database and administrative software



Track every job printed at your office using 25 different attributes.



Know your organization's exact printing costs and usage with print volume reports by department, users, time of day, and more.

