

Modular Object Scanning Technology

Manage documents from the MFP screen

Modular Object Scanning Technology (MOST)

FabSoft's Modular Object Scanning Technology provides on-demand distribution of documents right from the convenience of the multi-function peripheral (MFP). With just one trip to the MFP, users can copy and route documents to printers, fax, email and archive systems, and specify options for each destination. So if a user scans a document that needs to be emailed to another department, faxed to a client, archived to the company's document repository, and printed; all four actions can be completed right from the MOST interface on the MFP screen. MOST even integrates with backend databases, so recipient contact information can be searched for and selected. Additionally, the appearance of the MOST interface can be customized using the MOST Designer. Screens can be created for individual users or groups, and designed specifically for their particular document activities.



Effortless Document Distribution

With MOST, users can input specific document routing information right from the MFP screen.

SCAN TO FAX

- Select options in order to automatically fax the scanned document.
- Enter fax numbers, subjects, notes, etc.
- Access backend databases and perform searches in order to find a specific fax number or select a stored cover page.

SCAN TO EMAIL

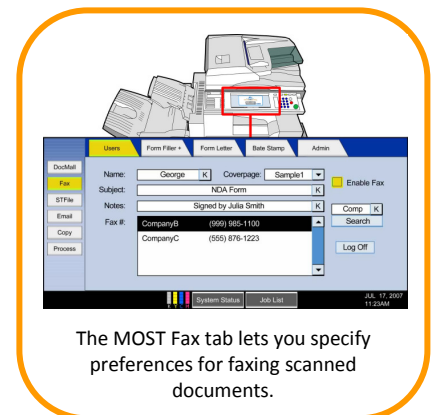
- Configure options so that scanned documents are automatically emailed.
- Enter email addresses, email body, subjects, notes, etc.
- Search through and select email addresses of contacts stored in backend databases.

SCAN TO LDAP HOME DIRECTORY

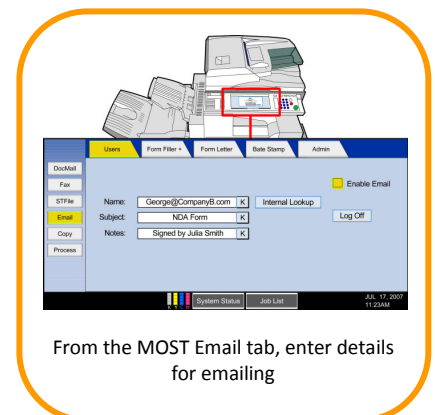
- Users can browse through their LDAP home directory right from the MOST interface on the MFP screen.
- Scanned documents are automatically sent to the LDAP folder that the user selects.

SCAN TO PRINTERS

- From the MFP screen, users can print scanned documents to any printer on the network and control all finishing options.
- Documents can be directly scanned, printed to the device and then delivered to the server for distributable copy.



The MOST Fax tab lets you specify preferences for faxing scanned documents.



From the MOST Email tab, enter details for emailing

Modular Object Scanning Technology



FabSoft
25 Canfield Road
Cedar Grove, NJ 07009
Phone 973.767.2100
Fax 973.695.5400
sales@fabsoft.com

SCAN TO ARCHIVE SYSTEMS

- Users can configure their documents to be stored to digital archive systems.
- Specify directory locations, indexes, descriptions, document types, etc. right from the MFP screen.
- MOST integrates with most major archive systems, such as DocumentMall.

CREATE CUSTOM WORKFLOWS

- MOST can be easily modified in order to create custom document workflows.
- Allows organizations to customize MOST according to their unique document activities and processes.

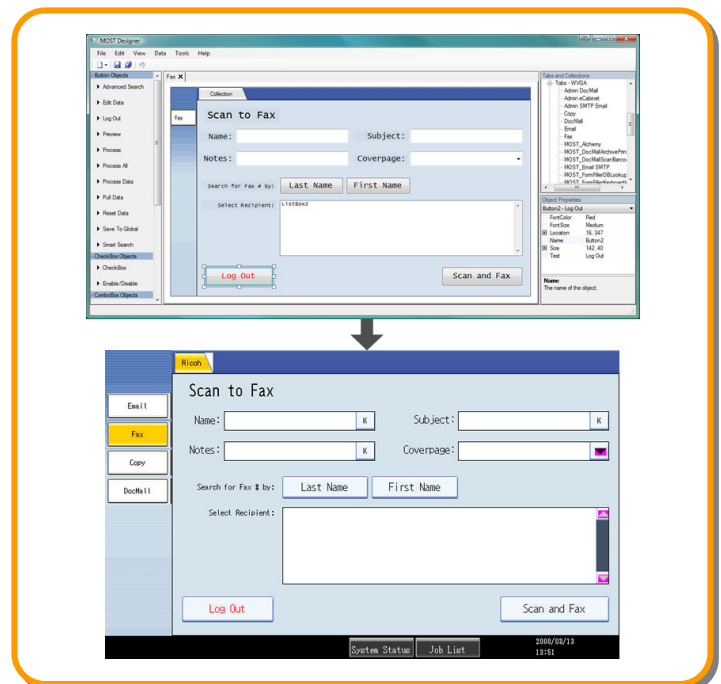
PDF OPTIONS

- Scanned documents are routed as PDFs with user control over options such as passwords, encryption, access rights, etc.

Customization with the MOST Designer

With the MOST Designer, the MOST interface on the MFP screen can be customized according to workflow.

- The MOST Designer uses a "what you see is what you get" approach for easy drag & drop customization of the MOST interface on the MFP screen.
- Different collections can be created with tabs tailored to the usage routines of each department or group.
- For example, the Front Office Collection can have entirely different tabs from the Warehouse Collection because their document activities differ.
- MOST recognizes the user and group upon login at the MFP, and automatically applies and displays the screen settings.



Benefits of MOST

- Easy to use WYSIWYG design tool for customizable MFP screen display and document flow.
- Login verification and 512 bit encryption for high security.
- Create your own custom workflow with built-in wizards.
- Easily update and install MOST on multiple machines with MOST's mass deployment tool.
- Built-in connectors to most common devices.
- Intelligent enterprise-wide load and error balancing.
- Status and activity logs to ensure document delivery and to monitor device usage.
- Roaming profiles - each user is presented with their own interface no matter which MFP they are using.
- Conveniently access information from databases and specify document routing to devices right from the MFP screen.
- Scan to fax, email and archive systems and specify all options.

MOST is compatible with select Ricoh Family Group devices and requires FabSoft's Reform® Enterprise. Other requirements may also apply depending on desired workflow.