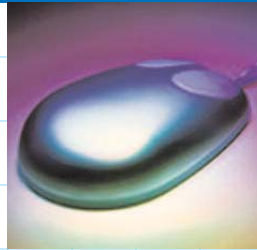


Savin



Intelligent Remote Management System



savin®

When You Have All The Facts, It's Easy To Make Intelligent Decisions.

Wouldn't it be great if you knew exactly how all of your network MFPs and printers were being utilized? Think about it... You could track device usage with pinpoint accuracy, see what systems you're using too much (or too little), and identify opportunities to reduce supply costs – all of which enable you to optimize fleet management and reduce running costs. Well, with Savin's® @Remote™ Intelligent Remote Management System, you can do all that and more.

The Information is There... Now You Can Put it to Use

Designed to implement an advanced device relationship management (DRM) strategy, the @Remote networked appliance collects operational data from your networked laser printers and multifunctional products MFPs – Savin and non-Savin devices – then automatically transmits this information via the Internet – using state-of-the-art secure communication capabilities – directly to our data center. Once received, the data is processed and



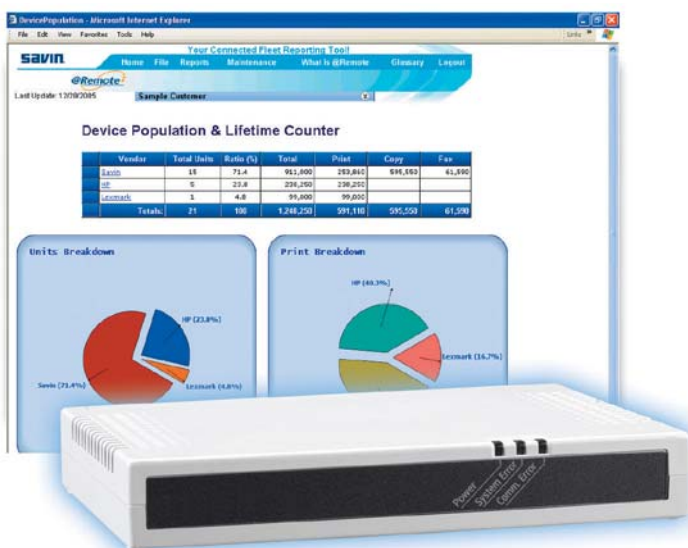
can be used to generate meter billing and fleet utilization reports. And, to ensure that you get the most from these reports, one of our sales professionals can review them with you and assist you in creating a strategy to reduce overall operational costs.

Transform Raw Data Into Increased Profits

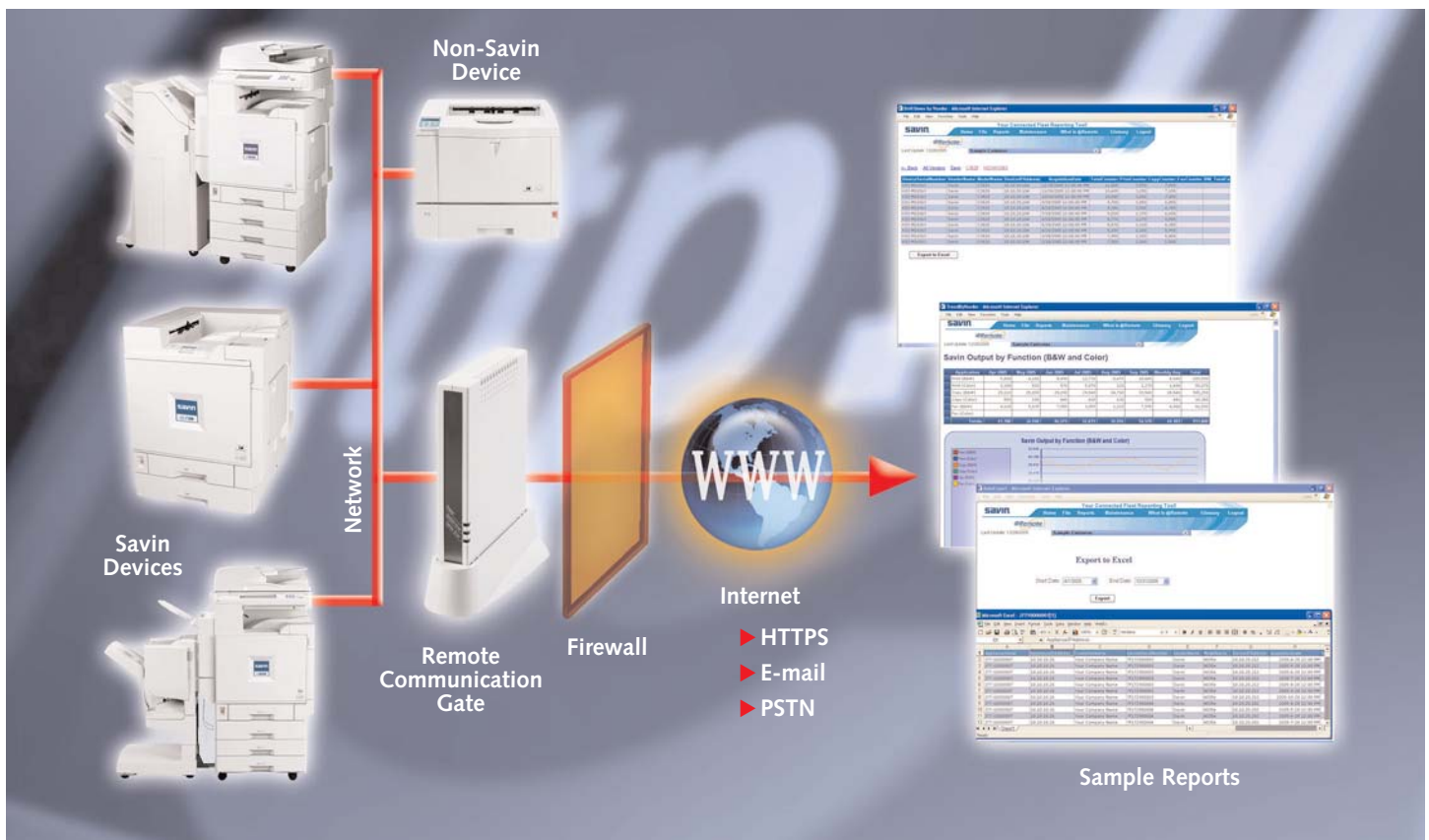
Your networked printers and MFPs offer valuable information that enables you to more efficiently oversee and manage your fleet. With @Remote's highly-detailed usage reports, you'll gain access to accurate fleet knowledge as you:

- Monitor all aspects of fleet usage thanks to Device Activity Reporting¹. @Remote extracts amazingly detailed device information in all applicable device modes including copy, print, fax and scan functions. For example, you'll be able to look at black-and-white and full-color usage for your network printers and copiers, plus you'll be able to see population, volumes, usage trending by vendor, network segment or location – so you can make better choices when it comes to overall fleet management.
- Examine copy and/or print volumes by device to determine which devices are underutilized – or overutilized, which lets you reallocate resources for optimal device placement with Accurate Page Volumes.

¹ Information varies based on device compatibility.



Fleet Reports allow you access to important information about your fleet such as actual utilization by function, including print, copy, scan and fax.



Eliminate The Hassle of Manual Meter Reading

Savin's @Remote technology provides accurate and up-to-date meter readings from your fleet – all without any user intervention or manual meter reading. Once the @Remote Appliance is connected to your network, meter counts can be transmitted and invoices can be created automatically. With @Remote's automatic meter reading capabilities, you'll eliminate the need to travel to each device, manually check each meter, and fill out postcards or faxes. This not only significantly increases productivity, but also ensures meter reading accuracy and significantly reduces the administration costs associated with the meter reading process.

Security In An "At-Risk" Environment

Understanding the real concerns regarding your requirements for network and information protection, @Remote provides you with a DRM solution that offers...

- High levels of data integrity using a secure communication path – similar to the type of security used for online banking.
- Three outbound communication choices – including HTTPS, PSTN or E-mail – designed to meet virtually any security requirement.
- Complete automation, which includes set-up and installation with no on-site support required by your IT professionals.
- Information Technology Security Certification.²

This Is Just The Beginning...

At Savin, we're committed to helping you reach the goals you've set for reducing overall TCO, optimizing fleet management and increasing employee productivity. With the introduction of @Remote, you'll have the tools you need to start analyzing your fleet and automate the meter reading process. In the future, you can expect to use @Remote technology to apply a predictive service model, automate service call notification, and enable remote firmware upgrades or device adjustments. With Savin, you'll gain an experienced business partner with the ability to expertly assist you in implementing an efficient and effective document management strategy.

² Common Criteria Security Certification pending.

For more information, contact your authorized Savin dealer.



Savin @Remote Specifications

EQUIPMENT TYPE	REMOTE COMMUNICATION GATE TYPE BN1 (NETWORK TYPE)	REMOTE COMMUNICATION GATE TYPE BM1 (NETWORK plus MODEM)
Configuration	Desktop "PC"-Type Appliance	
Connection Required to Network or MFP/LP	Ethernet or Direct Connection via Serial Cable	
Interfaces	Two Ethernet interfaces: (1) 10/100Base-T for Technician and (1) 10/100Base-T for General use	
		(1) RS-485 - half duplex serial port
		PSTN: (1) Line-in x (1) Line-out with Fax-Tel Switch
Modem		ITU-T V.34 (33.6kbps)
Platform/Software	Linux/Monta Vista Linux MVL PE2.1/MIPS & Application	
Web Server	Apache: HTTP/1.3.27 Conformity	
SSL	Open SSL 0.9.6m	
Processor	Type/Speed MIPS RISC CPU/200MHz	
Memory	Flash ROM 4MB/RAM 32MB/SD Card 32MB	
Displays	(3) LEDs, one each for Power, System Error and Communication Error	
Protocols	TCP/IP, SNMP, HTTPS, SOAP, SMTP, DHCP	
Maximum Number of Devices to be Monitored per Communication Gate	<ul style="list-style-type: none"> • 500 Networked Devices, including 5 direct-connect devices as described below • Up to 5 Savin non-networked devices may be connected via RS 485 Serial Cables to a max. of 50 meters 	
Meters Acquired and Reported	Savin Devices - Print, Copy and Fax ¹ Legacy and Non-Savin Devices - Print Meter ¹	
Battery	Lithium Coin Type for Clock	
Self- Diagnostics	Yes - power on self-test	
Environment	50~89.6 degrees F, 15~80% Relative Humidity	
Power Source/Consumption	120V, 50/60Hz/20W or less	
DC Resistance	350 Ω	
Dimensions	W 7.99" /D 5.7" /H 1.2"	
EDP Codes	429500	429503
Package Includes	Remote Communication Gate, Stand, AC Adapter and Power Cable, Setup Guide, NIC Cable, (1) 8.2' RS 485 Serial cable, (1) 15' telephone cord in BM-1 version only	
Weight	1.3 pounds or less	1.5 pounds or less
Option	Wireless LAN Card (Enables wireless LAN communication)	
EDP Code	429507	
Wireless LAN Card Kit Includes	(2) PCMCIA Type II Interfaces (1) IEEE 802.11b Wireless LAN Card	
Security Certification	² Common Criteria Security Certification EAL3	

¹ Information varies based on device compatibility.

² Common Criteria Security Certification pending.

Specifications and external appearance are subject to change without notice.

